

RESIDENTIAL DEVELOPMENT - ORLANDO INT'L AIRPORT/MEDICAL CITY AREA

3± acres • Osceola County, FL



LOCATION/DESCRIPTION

Single Family Residential site! 5 large lots to be subdivided. Located on Sheppard Ave and Setter Ave, approx. 1/2 mile east of Narcoossee Rd. Immediate access to major roadways: 7 miles to FL 417 with access to SR 528, Florida's Turnpike, I-4 and US 441. 20 min to Orlando Int'l Airport, 30 min to Downtown Orlando and the tourist corridor.

Within close proximity of the booming Orlando Int'l Airport/Medical City/ Lake Nona Area. Lake Nona/Medical City has already generated approx. 5,000 jobs, with 25,000 more expected by 2029.

SIZE

3± acres

PRICE

\$350,000

ZONING

Residential

UTILITIES

Water and sewer on site.

Offering subject to errors, omission, prior sale or withdrawal without notice.

LAND FOR SALE

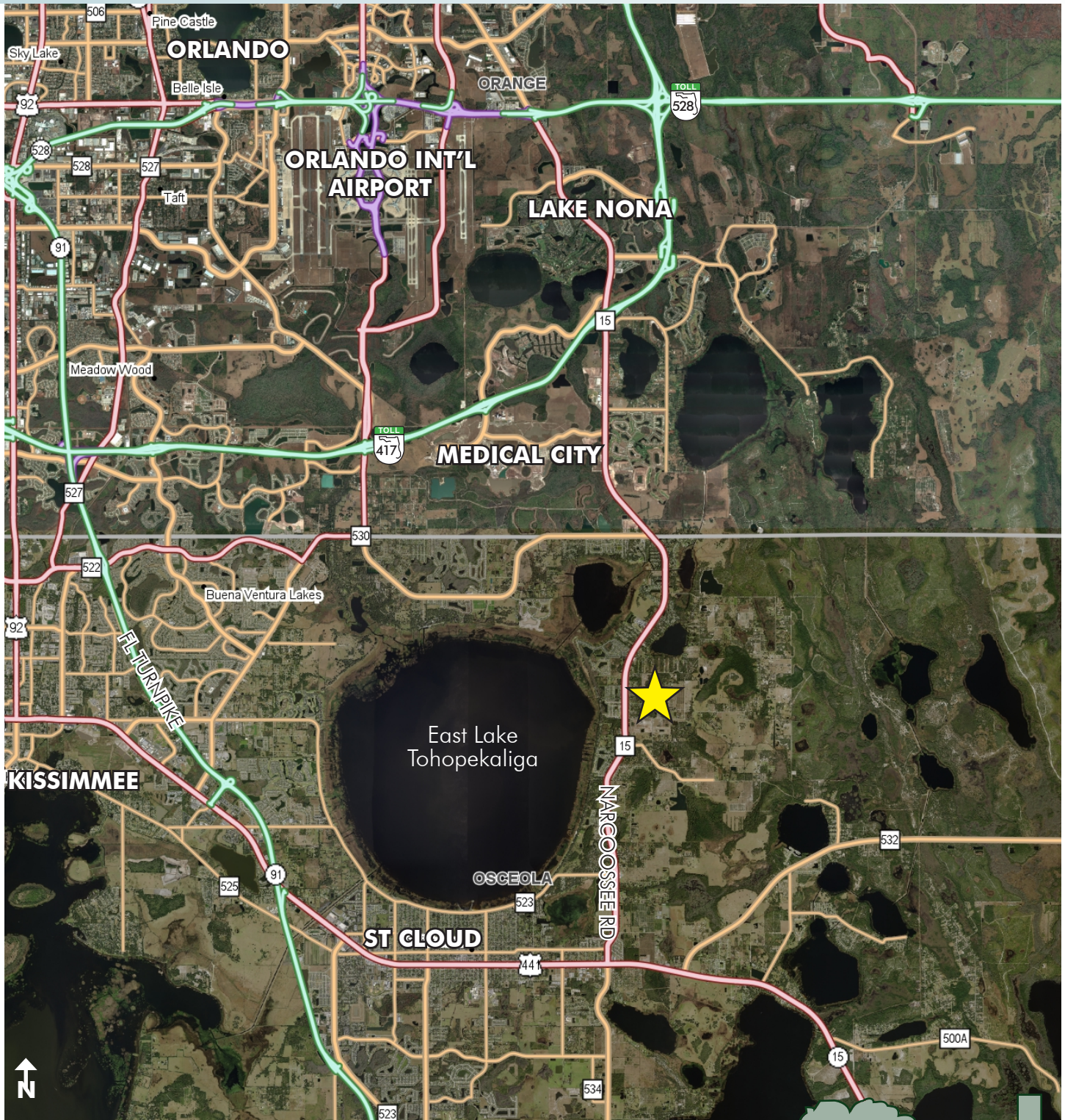
— Commercial Real Estate Investments | Management | Brokerage | Development | Land —

Maury L. Carter & Associates, Inc.
407-422-3144 | www.maurycarter.com



RESIDENTIAL DEVELOPMENT - ORLANDO INT'L AIRPORT/MEDICAL CITY AREA

3± acres • Osceola County, FL



LOCATION MAP

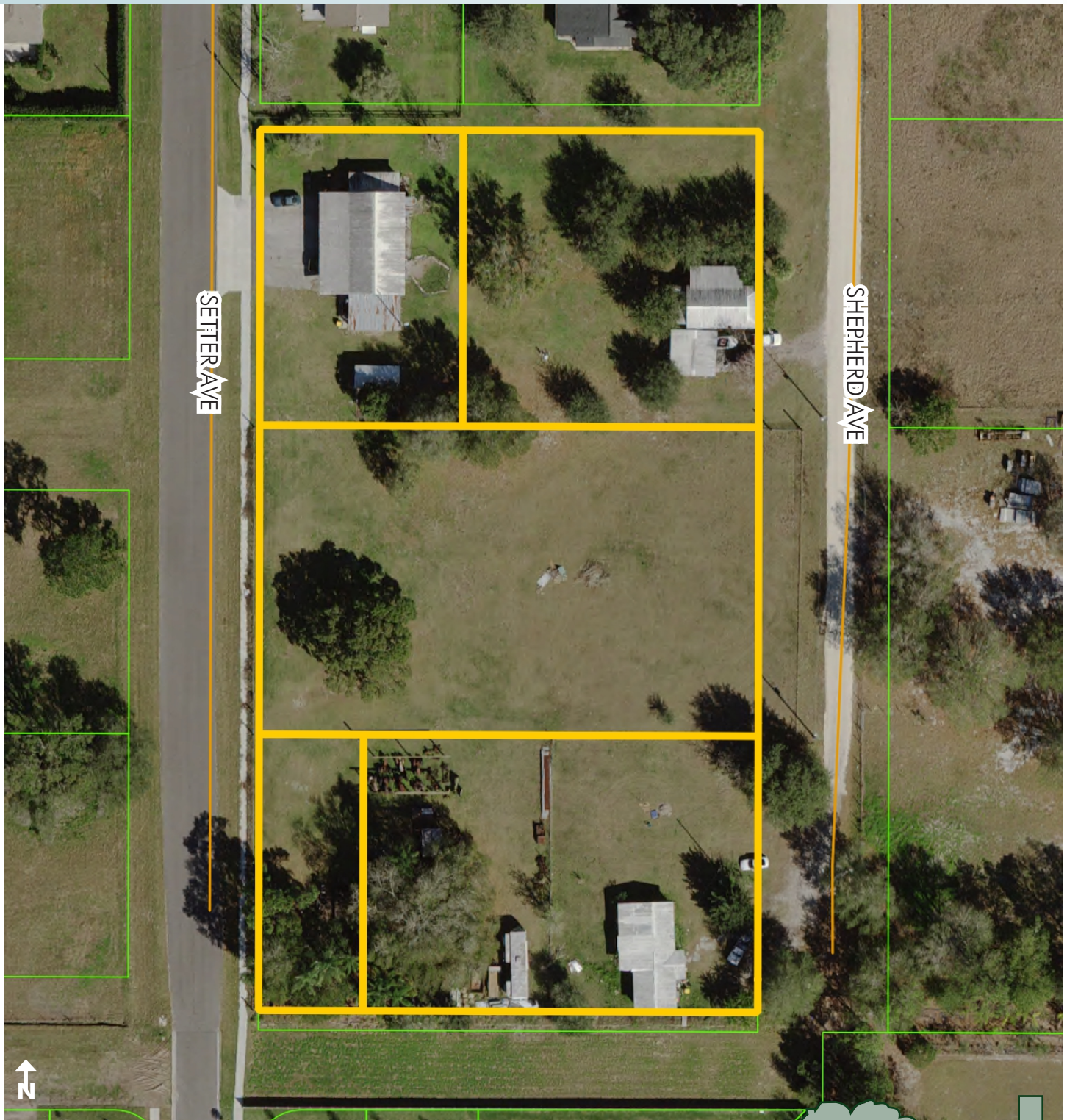
— Commercial Real Estate Investments | Management | Brokerage | Development | Land

Maury L. Carter & Associates, Inc.
407-422-3144 | www.maurycarter.com



RESIDENTIAL DEVELOPMENT - ORLANDO INT'L AIRPORT/MEDICAL CITY AREA

3± acres • Osceola County, FL



PROPERTY MAP

— Commercial Real Estate Investments | Management | Brokerage | Development | Land

Maury L. Carter & Associates, Inc.
407-422-3144 | www.maurycarter.com

