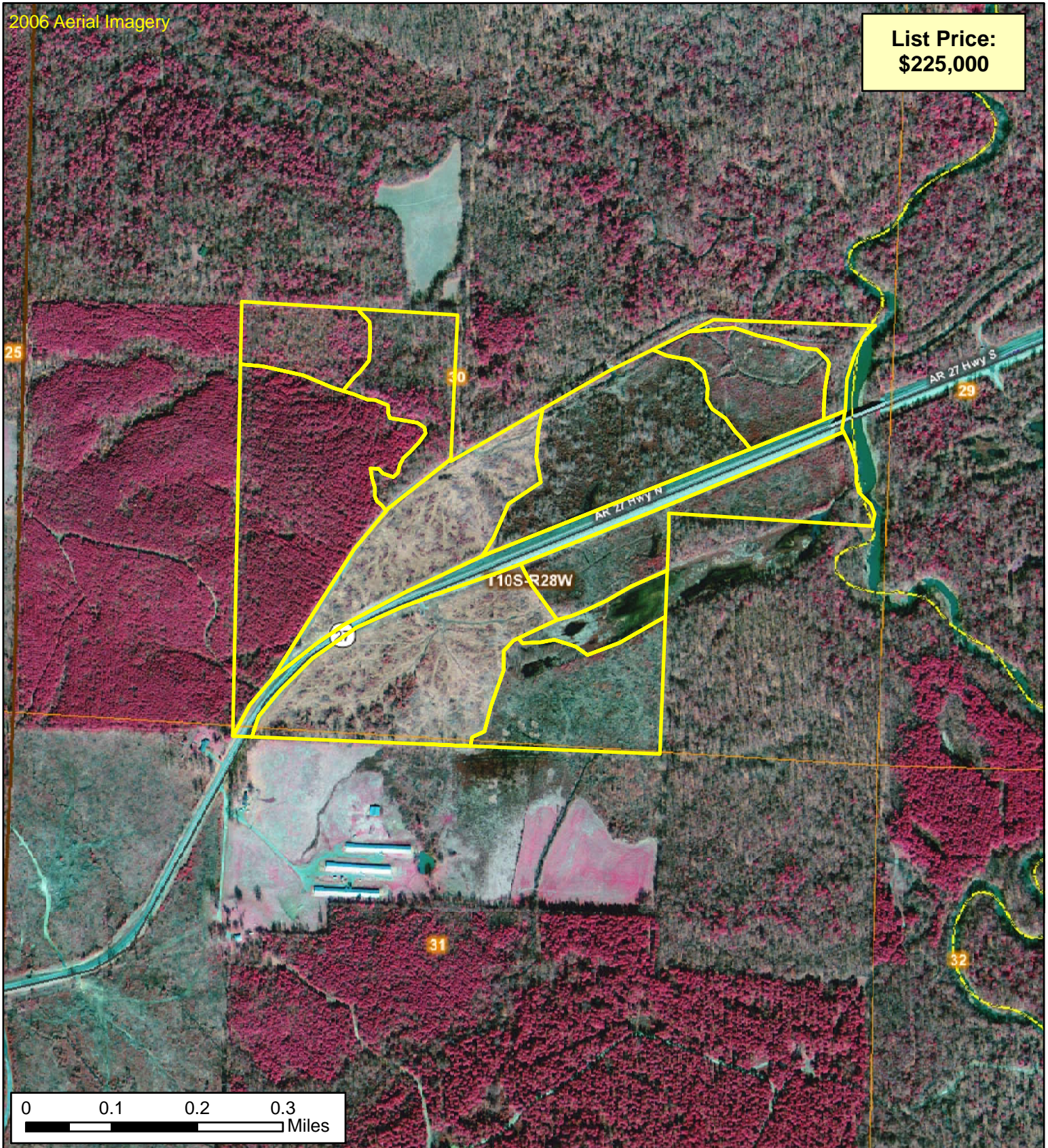


Millwood Lake Hwy 27

Section 30, Township 10 South, Range 28 West, Sevier County, AR. 178 +/- acres

2006 Aerial Imagery

List Price:
\$225,000



Phone: 1-888-695-8733
www.forestryrealestate.com

DAVIS DUBOSE
FORESTRY & REAL ESTATE CONSULTANTS PLLC

This map and all information it contains is provided "AS IS," as a courtesy to potential buyers. Potential buyers should make their own determination regarding the accuracy of the information provided. Neither the seller, Davis DuBose Forestry & Real Estate Consultants PLLC (DDFREC), their subsidiaries, affiliates nor representatives warrant the accuracy, adequacy or completeness of any information contained herein regarding the property, its condition, boundaries, access, acreage, or timber stand information. DDFREC expressly disclaims liability for errors or omissions.