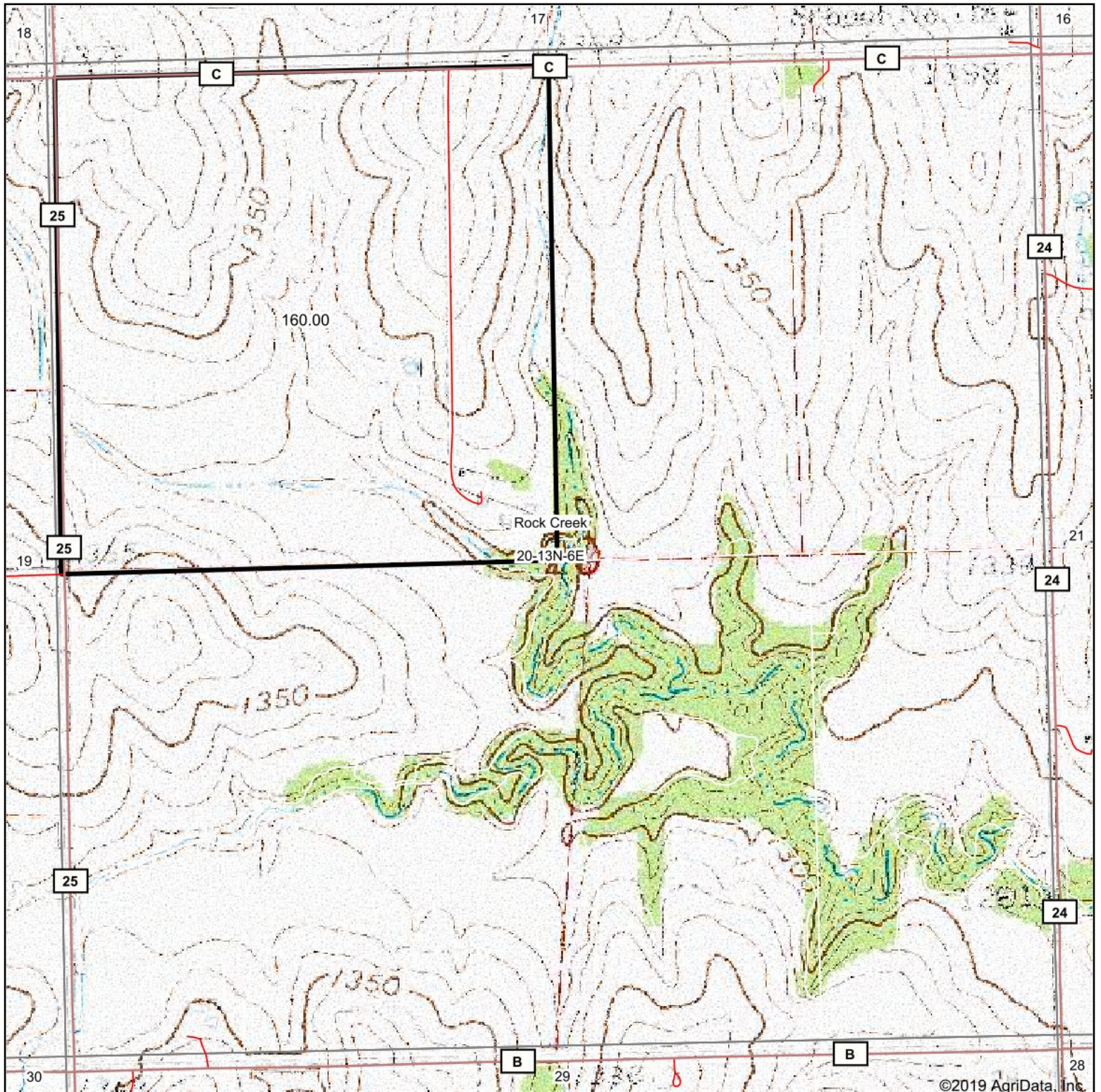


# Topography Map

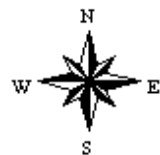


map center: 41.082328, -96.764962

0ft 830ft 1660ft

**20-13N-6E**  
**Saunders County**  
**Nebraska**

Maps Provided By:  
  
CUSTOMIZED ONLINE MAPPING  
© AgriData, Inc. 2019 www.AgriDataInc.com



5/16/2019