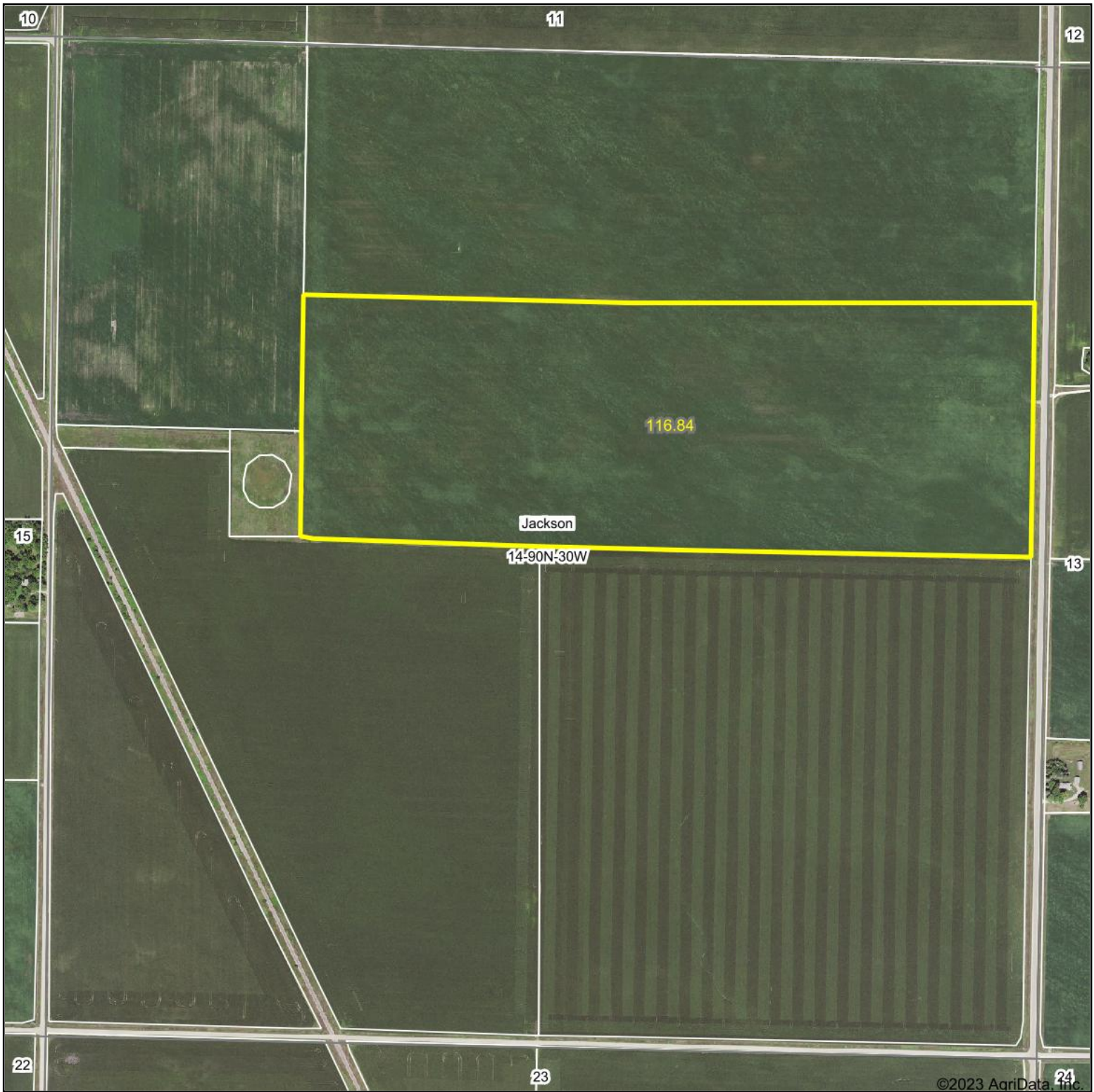


Aerial Map



Boundary Center: 42° 36' 39.56, -94° 21' 6.33

0ft 823ft 1646ft

14-90N-30W
Webster County
Iowa



Maps Provided By:



© AgriData, Inc. 2023

www.AgriDataInc.com

Field borders provided by Farm Service Agency as of 5/21/2008.