



2140 La Le Drive, Dardenne Prairie Commercial Land Auction

TROPHY
PROPERTIES AND AUCTION
LAND | RECREATIONAL | RESIDENTIAL

www.TrophyPA.com • (855) 573-5263 • leads@trophy.com



BIDDING ENDS THURSDAY, FEBRUARY 27TH AT 9:20 AM
SEE FULL TERMS & CONDITIONS AT WWW.TROPHYPA.COM



PROPERTY ADDRESS:

2140 La Le Drive
Dardenne Prairie, MO 63368

ACRES: 2.27

COUNTY: St. Charles

AUCTION DETAILS:

3% Commission to Buyers Agents!

Bidding Ends Thursday, February 27th at 9:20AM

This 2.27-acre (98,881.2 sq. ft.) commercial lot in Dardenne Prairie, MO, is perfectly positioned for development in a thriving and rapidly growing area. Located adjacent to Dardenne Town Square, the property benefits from proximity to major retailers like Target, JC Penney, Schnucks, and Marcus Theatres, making it an ideal site for retail, office, or mixed-use projects. With interstate visibility and multiple access points via Hwy N, Merz Farm Ln, and La Le Dr, the lot is highly accessible and offers excellent exposure. The area boasts strong demographics, with population growth exceeding 20% over the past decade, further adding to the property's appeal. Currently being farmed, this parcel is available as-is, where-is, with development subject to city approval. It can be purchased individually or as part of a larger package with other parcels available for auction. Don't miss this opportunity to capitalize on one of the most sought-after commercial locations in St. Charles County!



PRESENTED BY:

JAKE BROWN

Dir. Of Marketing/Realtor

M: (314) 602-1116

P: (855) 573-5263 x740

E: jbrown@trophy.com

Trophy Properties and Auction

640 Cepi Drive

Suite 100

Chesterfield, MO 63005

www.Trophy.com

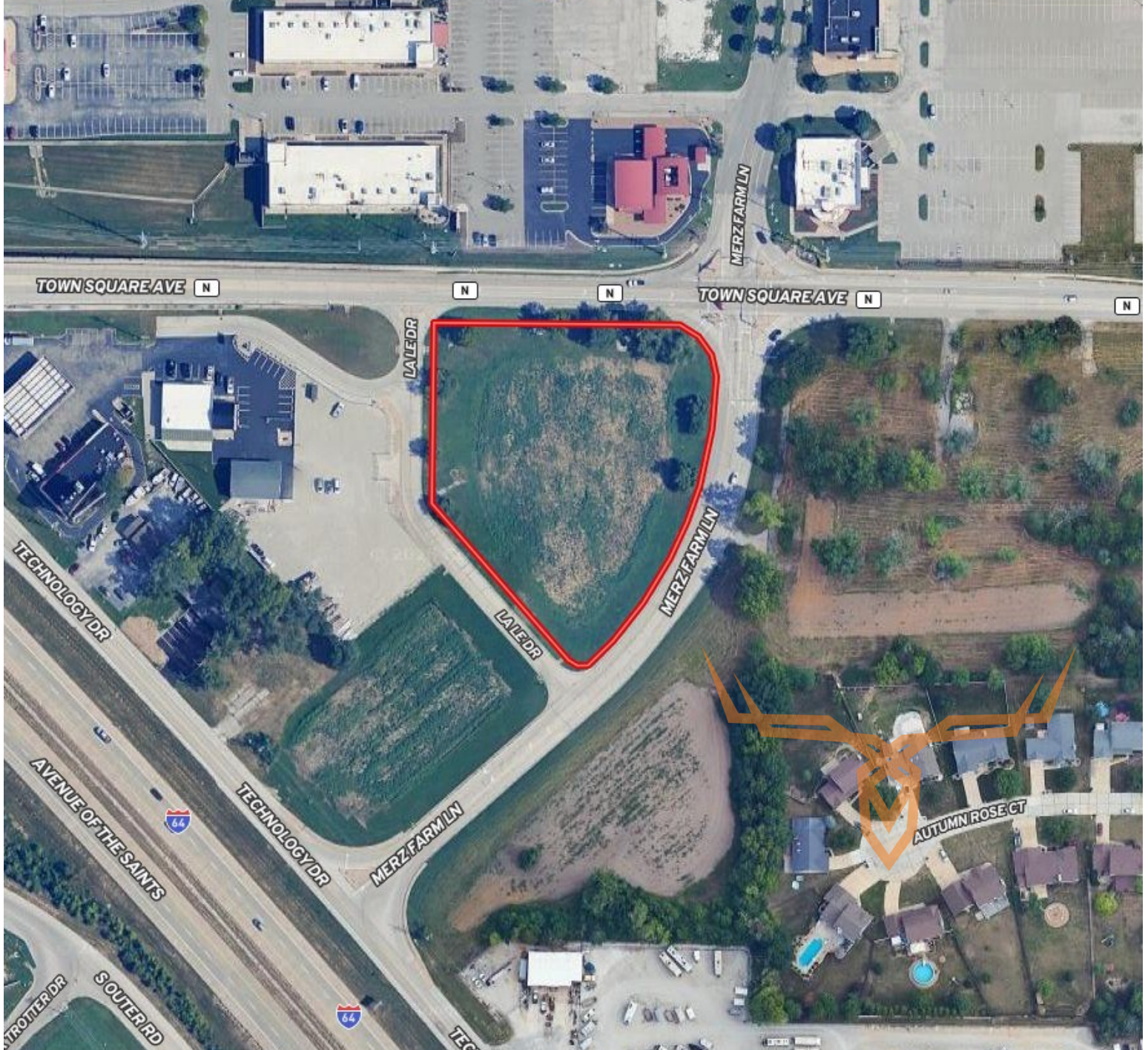
leads@trophy.com



2140 La Le Drive, Dardenne Prairie Commercial Land Auction

T R O P H Y
PROPERTIES AND AUCTION
LAND | RECREATIONAL | RESIDENTIAL

www.TrophyPA.com • (855) 573-5263 • leads@trohypa.com



The information is believed to be accurate; however, no liability for its accuracy, errors or omissions is assumed. All lines are drawn on maps, photographs, etc. are approximate. Buyers should verify the information to their satisfaction. There are no expressed or implied warranties pertaining to this property. Both real estate (including all improvements, if any) is being sold As Is, Where Is with NO warranties expressed or implied. Please make all inspections and have financing arranged prior to the end of bidding.