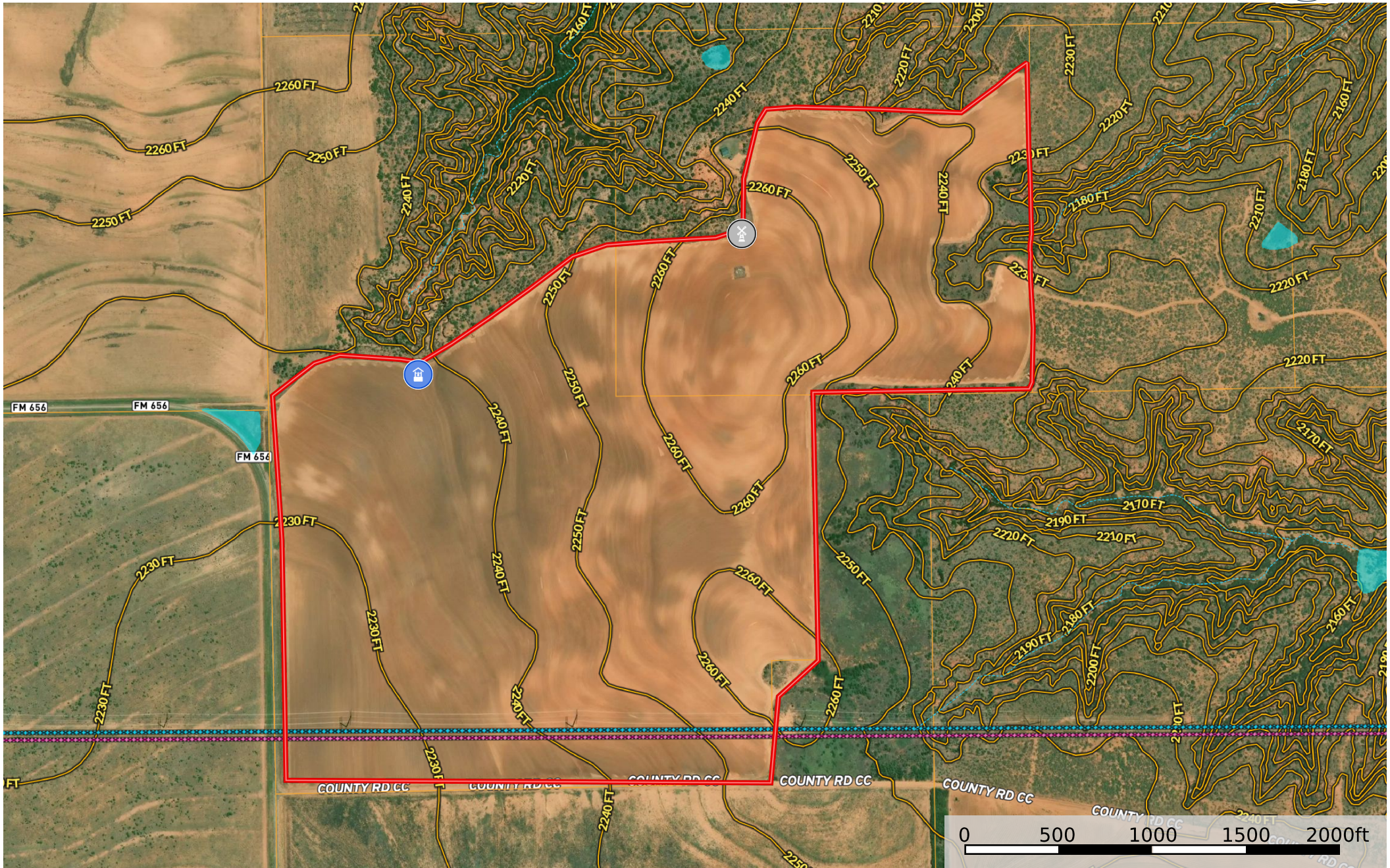


Williams 214
Hall County, Texas, 214 AC +/-



- Windmill
- Well
- Boundary
- Voltage Unavailable
- Voltage 0 - 99 KV
- Voltage 100 - 161 KV
- Voltage 220 - 287 KV
- Voltage 345 KV
- Voltage 500 KV
- Voltage 735 KV+
- Stream, Intermittent
- River/Creek
- Water Body